



### CNK 310 N Limit Switch Boxes (Mechanical Sensor)



- Aluminum die-casting housing and powder coated
- Secure waterproof, multi-angles visual valve positions involving top and side view
- Spring loaded splinted cam. No need to adjust again after initial setting and Easy setting without tool
- Standard 8 points and enough strips for connection(10 points for optional)
- Dual cable entries:2×G1/2 (Standard) and 2-M20×1.5, 2X1/2NPT (Optional)

- No worry to loose bolts while cover opens with captive cover bolts
- NAMUR standard steel plate or stainless steel (optional) shaft and bracket
- Weather proof is IP 67.
- 2-SPDT mechanical switches as standard(0.6A/125VDC ,0.3A/250VDC ,15A/1/2HP 125/250VAC)

### Structure and Material



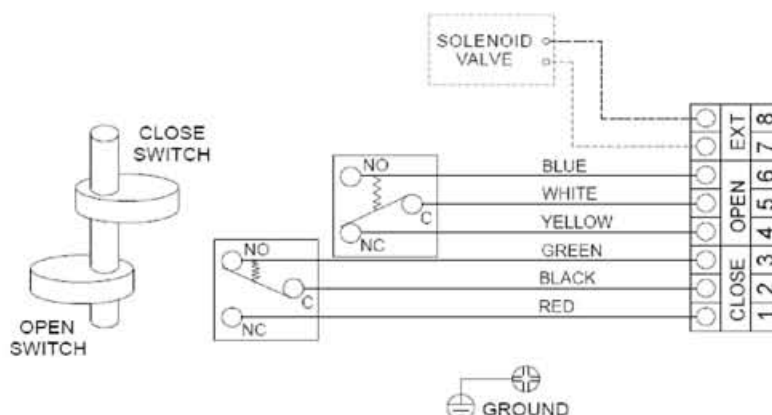


No.	Part Name	Qty.	Material
1	Box Cover	1	Aluminum Die Casting
2	Box Body	1	Aluminum Die Casting
3	Shaft	1	Stainless Steel
4	Indicator Cover	1	Polycarbonate
5	Indicator	1	ABS/Polycarbonate
6	Limit Switch	2	Mechanical
7	Terminal Strip	8	Polycarbonate Tin Plated Brass Stainless Steel
8	Cam	2	Polycarbonate
9	Spring	1	Stainless Steel
10	Cover Bolts	4	Stainless Steel
11	Shaft O-ring	2	NBR
12	Housing O-ring	1	NBR
13	Indicator O-ring	1	NBR
14	Bushing	2	Bronze
15	Earth Lug	1	Stainless Steel
16	E-ring	2	Stainless Steel

**Specification**

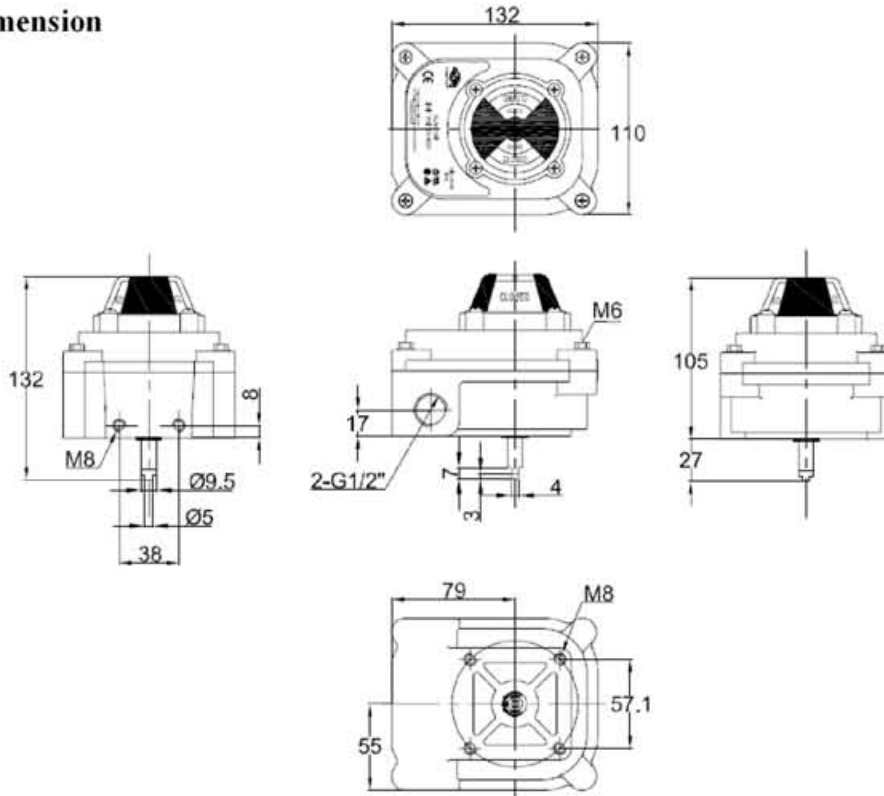
Model		Weather proof	Temperature Range	Cable Entry	Terminal Strips	Position Indicator	Switches
CNK-310N	Standard	IP67	-20□~85□	2×G1/2	8 Points	0,90°	Mechanical (15A125-250VAC)
	Option			2-M20×1.5 2×1/2NPT	9~24 Points	Open-Yellow Close-Red	

**(2 SPDT) WIRING DIAGRAM**





### Dimension



### Mounting

Model	Picture	Material	Application
MB-3.3		Steel plate	30X80(130) H:20~30
		Stainless steel	